

Placement Brochure  
2010 - 2011

Indian Institute of Science Education and Research Pune

# Message from the Director

IISER Pune has made bold and rapid strides in its short period of existence. It has been a unique opportunity for us to be involved in the historic process of “building a new institution” for the coming generations of Indian scientists.

As Pt. Jawaharlal Nehru said - “It is an inherent obligation of a great country like India with its traditions of scholarship and original thinking and its great cultural heritage to participate fully in the march of Science, which is probably mankind's greatest enterprise today..” - this epitomizes the essence of science and remains relevant even today.

An IISER education enables students to think independently and embark on new initiatives towards purposeful goals. Our students will therefore not only fit pre-defined job descriptions in academia/ industry, but will also go beyond - generating novel career paths. I sincerely hope that the Institute's placement office will facilitate matches between the needs of the recruiting organizations and the talents of our students.



Professor K. N. Ganesh  
Director, IISER Pune

# Contents

- ❑ IISER Pune - An Introduction
- ❑ Programme Information
- ❑ Selection Procedure
- ❑ Research and Development
- ❑ Infrastructure
- ❑ Extra-curricular Activities
- ❑ Career Development Centre
- ❑ Placement Procedure
- ❑ Contact Information

## IISER Pune - An Introduction

The Government of India, through the Ministry of Human Resource Development, established the Indian Institute of Science Education and Research (IISER) Pune in 2006. IISER represents a unique initiative in Indian science, where state-of-the-art research meets undergraduate teaching. With this goal in mind, the Government of India has generously funded IISER with an initial financial outlay of 500 crores.

IISER Pune is an autonomous institution awarding Master's and Doctoral degrees in the basic sciences. The institute currently has 50 faculty members and 300 undergraduate students.

The institute has bilateral research ties and exchange programmes with premier institutions in various countries including France, Germany, Japan, Singapore, USA and UK. This has created an international research ambience at IISER Pune.





## IISER Pune: a unique initiative

- ❑ Active researchers teach undergraduate students
- ❑ Extensive research experience for students at all levels
- ❑ Year-long research project, leading to peer-reviewed thesis, at the undergraduate level

# Programme Information

## I. B.S. - M.S. Dual Degree (five years)

- ❑ The first two years establish a strong foundation in the four basic disciplines - biology, chemistry, mathematics and physics. In addition there are courses devoted to communication skills, scientific computing and topics in cross-disciplinary sciences like earth, planetary, atmospheric and environmental sciences.
- ❑ In years three and four, students identify one or more disciplines of interest and take advanced courses in these. Particular emphasis is paid to issues like ethics and integrity in science, the role of science in society and science journalism.
- ❑ Year five is entirely devoted to research. Scientists from leading institutes and industries visit IISER regularly to select students for the fifth year project: examples include Sokendai, NUS, Novozyme, Khorana Programme, IISc, DAAD and Advinus.

## II. Ph. D. Degree

- ❑ The Ph. D. programme involves rigorous course work followed by original research leading to a doctoral thesis. At present there are over fifty research scholars enrolled in the Ph. D. programme.



## Evaluation

IISER Pune follows the semester system and has a continuous evaluation process. The assessment system is geared towards rewarding understanding as opposed to by-rote learning. Students are awarded grades based on their performance:

| Grade | Points | Remarks   |
|-------|--------|-----------|
| A     | 10     | Excellent |
| B     | 8      | Good      |
| C     | 6      | Average   |
| D     | 4      | Pass      |
| F     | 0      | Fail      |

# Selection Procedure

## 1. IIT - JEE

The IIT Joint Entrance Examination (JEE) is a highly competitive examination taken by over 4,00,000 students across the country. Students are admitted to the five-year B.S. - M.S. programme through this exam.

## 2. Science Olympiads and KVPY

Students selected for the Indian Science Olympiad Camps and KVPY scholars are automatically eligible for admission to the B.S. - M.S. programme.

## 3. Top 1% of School Boards

Students in the top 1% of the class 12 exam will become eligible for admission to the B.S. - M.S. programme.

All undergraduate students admitted to the institute receive the “INSPIRE” scholarship, of Rs. 80,000 annually, from the Department of Science & Technology (DST).

## 4. CSIR - NET

Candidates who are selected as Junior Research Fellows through the NET examination of the Council for Scientific and Industrial Research (CSIR) are eligible for admission to the Ph. D. programme.



# Research and Development

## Academic Research

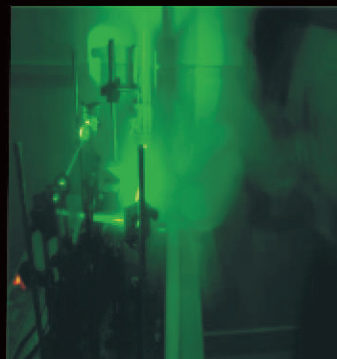
Faculty members regularly publish their research findings in peer reviewed journals of international repute. The IISER model encourages even undergraduate students to get involved in research. Students are actively encouraged to publish research in refereed journals.

## Sponsored Research

IISER has an impressive catalogue of research projects funded by national and international organizations. These include the DST, DBT and ISRO at the national level and the Max Planck Society, Wellcome Trust and CEFIPRA at the international level.



500 MHZ NMR Spectrometer



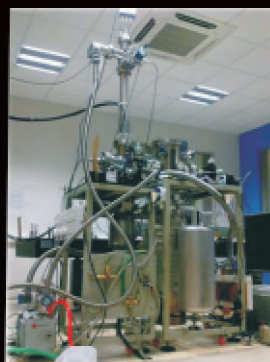
FCS

## Centres of Excellence

IISER Pune has set up the following centres of excellence devoted to frontier research topics in the sciences:

- ❑ Nanoscience Unit
- ❑ Centre for Epigenetics
- ❑ Max Planck Partner Group (Physics)

The institute plans to set up centres devoted to imaging technology and chemical biology in the near future.



Gas Phase Laser Spectroscopy



MALDI ToF ToF

# Infrastructure

**Library:** Apart from an extensive book collection, the library has 5000 e-books, 2000 scientific journals and video tutorials.

**Lecture Halls:** The main IISER lecture halls are equipped with Bose audio systems, Supernova high-contrast screens and wall-to-wall blackboards.

**Laboratories:** The Institute is equipped with state-of-the-art research and teaching labs in biology, chemistry and physics.

**Cluster computer:** IISER has a 6 Teraflop supercomputer devoted to scientific computing.





## Extra-curricular Activities

### ❑ KARAVAAN

Signature cultural festival of IISER Pune started in 2007 and well attended by the national student community.

### ❑ IISER Premier League (IPL)

This cricket event pits eight teams against each other and includes a faculty team.

### ❑ SPICMACAY

IISER is an active hub for SPICMACAY in Pune. Performers who have visited IISER include Pt. Ronu Majumdar, Ileana Citaristi, and U. R. Ananthamurthy.





## Career Development Centre

The Career Development Centre (CDC) at IISER Pune serves as an interface between the institute's students and the world of employers.

Facilities available at the centre include:

- Auditorium to conduct pre-placement talks
- Campus tour including visit to R & D facilities
- Hill-view guest house rooms (subject to availability)
- Furnished, air-conditioned board-room with video conferencing facility
- Office space including computers with wired/wireless internet access

Student volunteer teams will host company representatives



# Placement Procedure

- ❑ Company sends pre-placement material to the Career Development Centre (CDC)
- ❑ CDC makes student resumes available to company along with campus interview dates
- ❑ Company reverts with shortlist of candidates to CDC one week in advance of interview date
- ❑ Offer letters are sent to students through the CDC



## Contact Information

### Career Development Centre Indian Institute of Science Education and Research

First Floor, Central Tower, Sai Trinity Building  
Pashan-Sus Road, Pune 411 021  
Phone: 020 2590-8001 Fax: 020 2589-9790  
E-mail: [placement@iiserpune.ac.in](mailto:placement@iiserpune.ac.in)

#### **Dr. A. A. Natu**

Faculty-in-charge, CDC  
E-mail: [aa.natu@iiserpune.ac.in](mailto:aa.natu@iiserpune.ac.in)  
Phone: 020 2590-8052

#### **Dr. V. S. Rao**

Registrar (Officiating)  
E-mail: [registrar@iiserpune.ac.in](mailto:registrar@iiserpune.ac.in)  
Phone: 020 2590-8002

#### **Arpit Yati**

Student Representative  
E-mail: [a.yati@iiserpune.ac.in](mailto:a.yati@iiserpune.ac.in)  
Phone: +91-9922252287